

*msi*

# PRO AP272P 14M

Business & Productivity All-in-One PC

Infokit v1.2



THE LEAP TO  
SINGULARITY

*msi*

Be Your Window To The World  
**PRO AP272P Series**

Business & Productivity All-in-One PC



**MSI**

# PRO AP272P 14M

Business & Productivity All-in-One PC

*msi*

Tailored for  
Professional Users

Optimal Care  
with EyesErgo  
Technology

Reliable Choice  
for Business

Design with  
Convenient  
Versatility

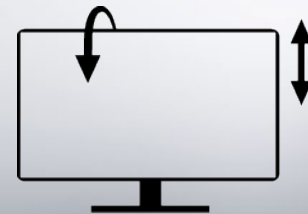


# PRO AP272P 14M – Key Features

*msi*



MSI recommends  
Windows 11 Pro for business



Adjustable Stand



Desktop CPU up to  
Intel® Core™ i7 Processor 14700



dTPM  
2.0



IR FHD  
Camera



Windows  
Hello



Enhanced  
Privacy

# PRO AP272P Series

*msi*



Adjustable Stand  
-5° ~ 20° (Tilt)  
0 ~ 100 mm (Height)



27-inch IPS with  
Full HD (1920 x 1080)



VESA  
Mountable



IR FHD Webcam  
with Webcam Cover



# Resilient and Pioneering Spirit of Your Business

*msi*

Your business should be empowered to stop at nothing while navigating your journey with the MSI Business & Productivity Series products.



Business



Hostel & Restaurant



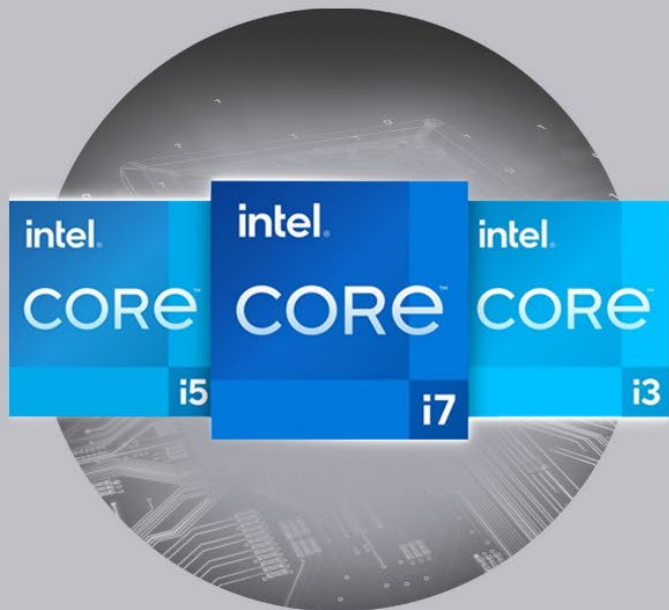
Education



Medical & Science

# Tailored for Professional Users

*msi*



Equipped with up to 14th Gen Intel® Core™ i7 Processor 14700 Desktop Processor with 20 cores and 28 threads, it provides faster and more reliable performance.

It also features 5.40 GHz with Intel Turbo Boost Max Technology 3.0, which allows users to easily multitask various applications.

Up to  
**Core i7 Processor  
14700**

Support  
**Windows 11 Pro**

Up to 5600MHz  
**DDR5 64GB**  
Dual Channel Memory

\*The actual specification will vary by model.

# DDR5 Dual-Channel Memory

*msi*

DDR5 memory with dual-channel can enhance work efficiency and quality, processing large amounts of data and complex multitasking quickly and reducing waiting times and delays.

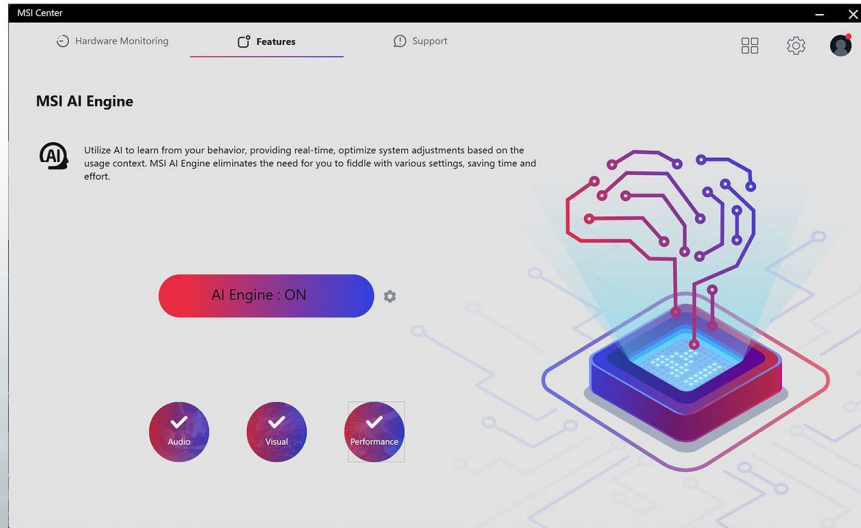
\*The actual specification will vary by model.





# MSI AI Engine

MSI AI Engine automatically detects user scenarios and adjusts performance, sound effects, and display mode accordingly, eliminating the need for manual adjustments.



\*Please install the MSI AI Engine from the MSI Center.

\*The interface and functionality may differ due to version change.

# Optimal Care with EyesErgo Technology

*msi*



The PRO AP272P Series is designed to promote well-being. The MSI EyesErgo technology features TÜV-certified Anti-Flicker and Less Blue Light, an anti-glare panel, and an ergonomic stand to help safeguard your eyes.

# MSI Eye Care: Anti-Flicker + Less Blue Light Technology + Anti-Glare Display

MSI Anti-Flicker, Less Blue Light technologies and anti-glare panel help to protect your eyes over extended periods of viewing your data and research.



PRO AP272P Series



Without Anti-Flicker



Without Less Blue Light



Without Anti-Glare

# 100Hz High Refresh Rate

Having a high refresh rate display can make for a better viewing experience and put less strain on eyes by displaying more images in the same amount of time, making for a smoother and more enjoyable experience.

Say goodbye to blurry images and hello to crystal-clear visuals.



6. Quality of Goods &  
(i) The goods to be supplied shall be free from manufacturing defects and shall be replaced with a new one if found defective.  
(ii) The goods shall be replaced with a new one if found defective.  
(iii) The first party shall be responsible for the goods.

free from manufacturing defects and shall be replaced with a new one if found defective.  
(ii) The goods shall be replaced with a new one if found defective.  
(iii) The first party shall be responsible for the goods supplied and the bid document.

**100 Hz**

# Adjustable Stand

*msi*



With the ability to adjust both the tilt and height, you'll always be able to manage the E-commerce comfortably and efficiently, no matter your position.

Experience ease and convenience like never before.

# Tool-less & VESA Mountable Design

The PRO AP272P series features a tool-free assembly and disassembly design that provides a convenient user experience.

Additionally, it supports the VESA standard, making it easy to mount on the wall at home or in the office.





# Reliable Choice for Business

*msi*

With the robust and secure design, the PRO AP272P series ensures that systems operate seamlessly and that sensitive data is safeguarded from unauthorized access.



# Reliable Choice for Business

*msi*

## dTPM Module



dTPM 2.0 technology provides hardware-based security functions. Sensitive data and passwords can be stored with encryption for advanced protection.



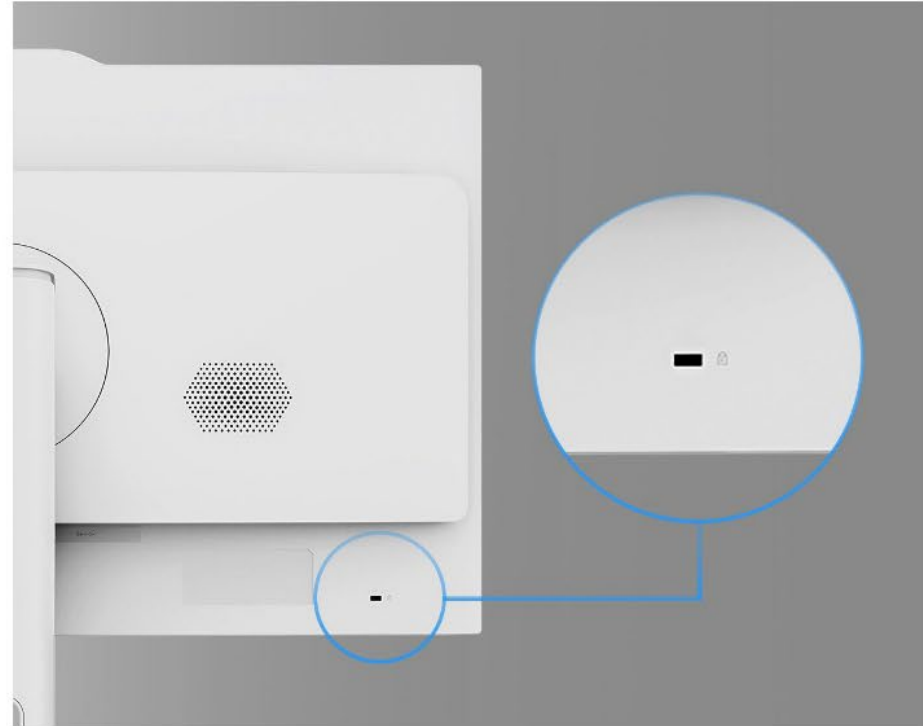
# Reliable Choice for Business

## Kensington Lock



The Kensington lock design is a reliable and efficient method of deterring theft.

By physically tethering the PRO AP272P to a secure object, Kensington lock is particularly useful in safeguarding the device and the valuable data in it.



# IR Full HD Webcam with Webcam Cover

*msi*

## IR FHD WEBCAM

Enhance the online conference experience or course presentation with the use of an IR Full HD webcam.

## WINDOWS HELLO

The Windows Hello biometric authentication system provides a faster and more secure way to log in to your PC.

## WEBCAM COVER

Always cover the webcam when not in use to stay safe.



# 24 / 7 Qualified Reliability Test



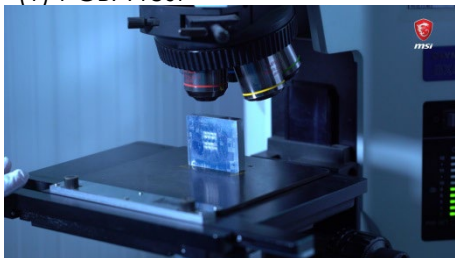
Our relentless commitment to quality is reflected in our extensive reliability testing, which generates over 246,000 hours of MTBF (Mean Time Between Failures). We assure 24/7 reliability and availability, delivering an effortless user experience.

Quality is not just a buzzword for us, it's our top priority to deliver a hassle-free and high-quality product.



# Intensive Quality testing

(1) PCBA test



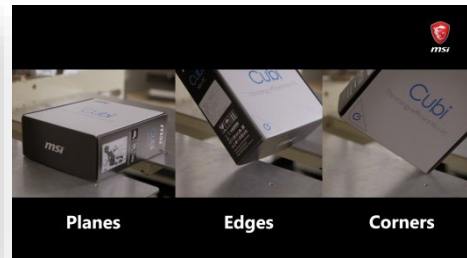
(2) Motherboard test



(3) Vibration test (X & Y Axis)



(4) Drop test



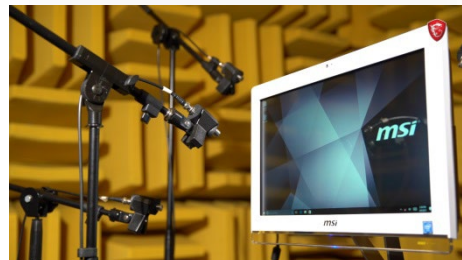
(5) Chamber test (Temp. & Humidity)



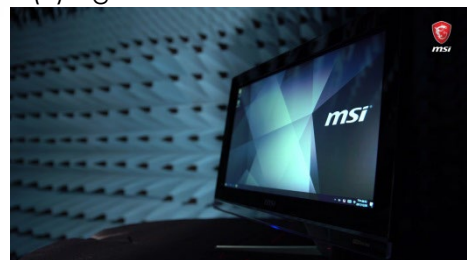
(6) Infrared (IR) test



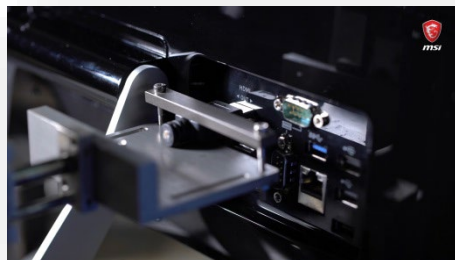
(7) Acoustic test



(8) Signal test



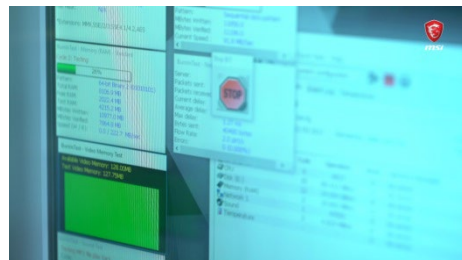
(9) I/O port life test



(10) Power test



(11) System performance test





# Uncompromising Product Quality

*msi*

MSI products exemplify uncompromising quality.

Through strict adherence to the MIL-STD-1916 testing standard in our factory inspections, we consistently achieve excellence in performance, durability, precision, and reliability.

This commitment places MSI at the forefront, enabling us to consistently deliver outstanding designs to customers.

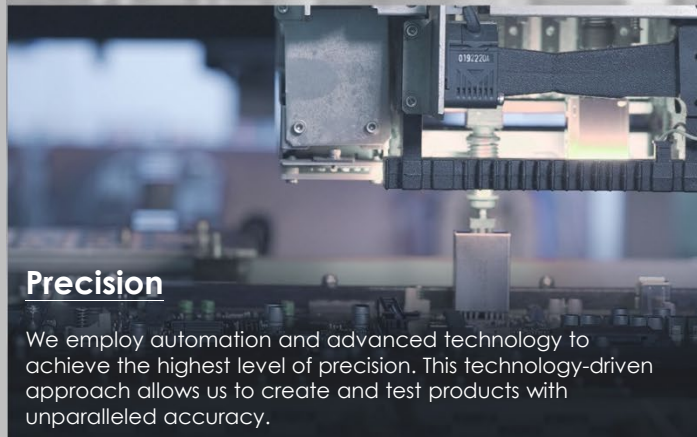
MSI modernized factory offering high-quality products Video:

<https://www.youtube.com/watch?v=ZvZ2GPn7CMc>



## Performance Assurance

MIL-STD-1916 testing guarantees MSI products meet high-performance standards, providing reliable and professional experiences with desktop PCs at their best.



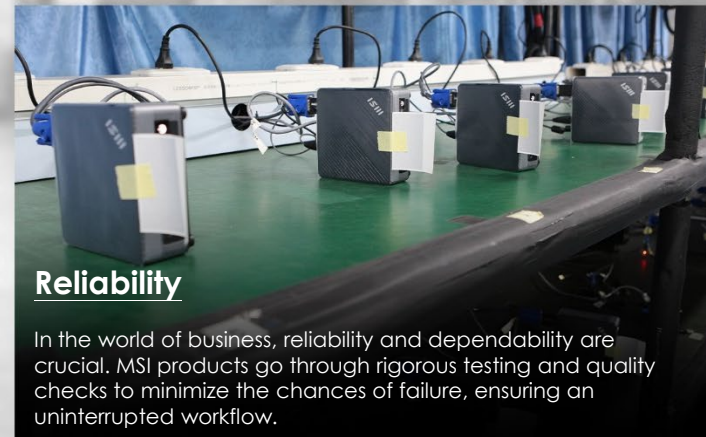
## Precision

We employ automation and advanced technology to achieve the highest level of precision. This technology-driven approach allows us to create and test products with unparalleled accuracy.



## Durability

MIL-STD-1916 testing ensures every component meets strict durability standards, making MSI products capable of lasting through extended gaming and work sessions while delivering reliable performance.



## Reliability

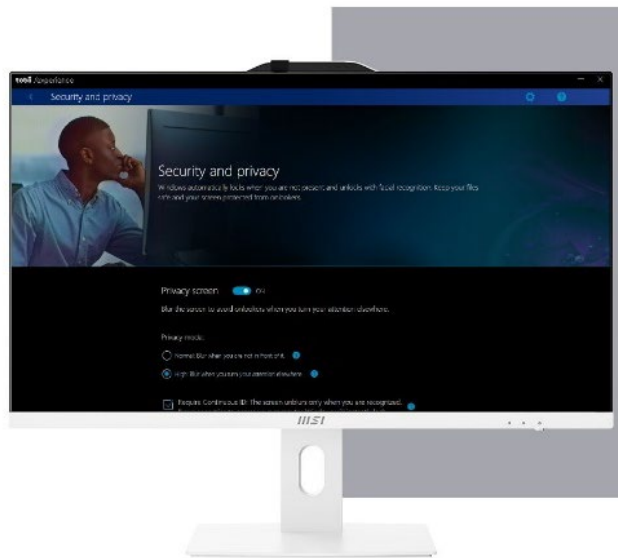
In the world of business, reliability and dependability are crucial. MSI products go through rigorous testing and quality checks to minimize the chances of failure, ensuring an uninterrupted workflow.

# Protect Your Privacy with Tobii Aware

*msi*

**tobii**AWARE

To assure users' information security, AP272P features Tobii Aware software which is a set of smart features that enable users to increase their privacy, security and productivity.



## Privacy Screen

The contents of the screen are blurred when the user looks or steps away, and un-blurred only for the correct user.

## Auto-Lock

Enhance privacy and security by automatically locking the screen shortly after the user leaves.

## Peeker Detection

This feature uses subtle visual clues to let you know when someone behind you is looking at your screen. Aware also offers automatic or reaction-based privacy screen blur to protect the information in situations that require a high level of privacy.

## Dim Screen

Improve power efficiency in a natural and unobtrusive way. Your screen brightness will dim and undim when you step away and come back.

## Windows Snap

Make your life easier by snapping your selected window between screens based on your attention.

## Stay Awake

No need to worry about your device dimming or going to sleep when you aren't active. Keep your computer awake as long as you are there.

# MSI Cloud Center

*msi*

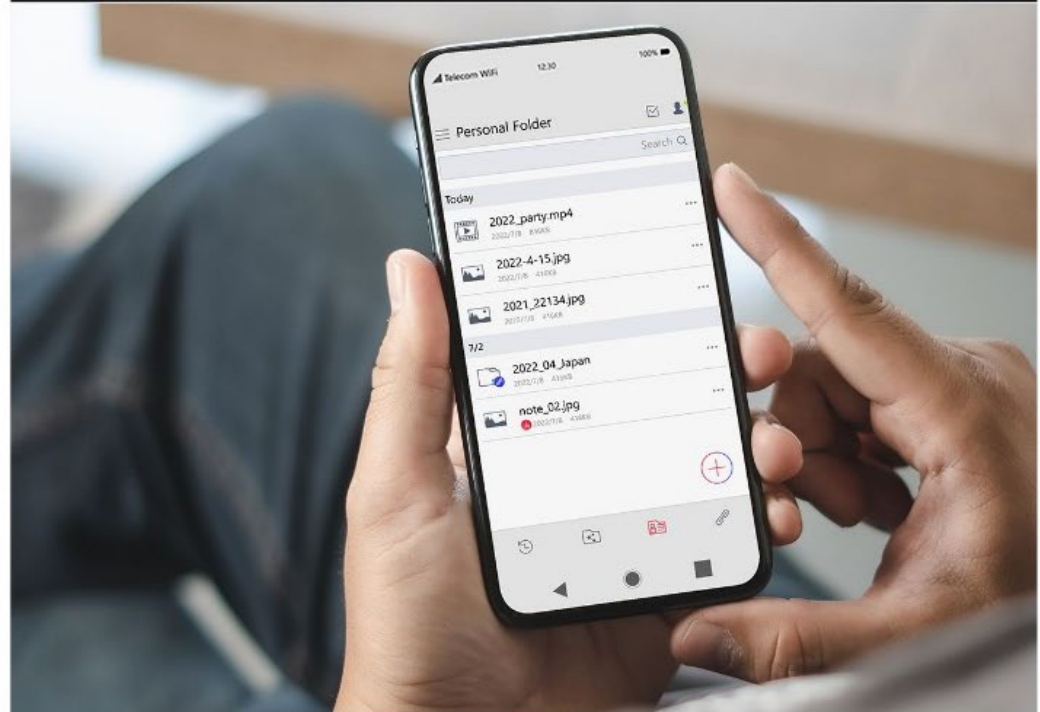


Fast, secure & wireless backup  
between PC, Android & iOS Devices

More information, please visit:

<https://www.msi.com/Landing/MSI-Cloud-Center>

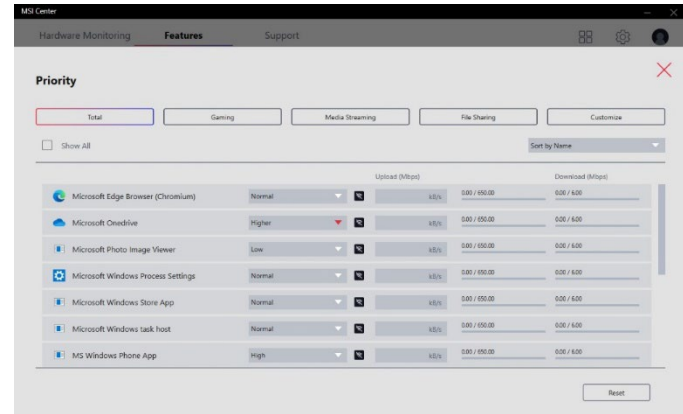
MSI Cloud Center



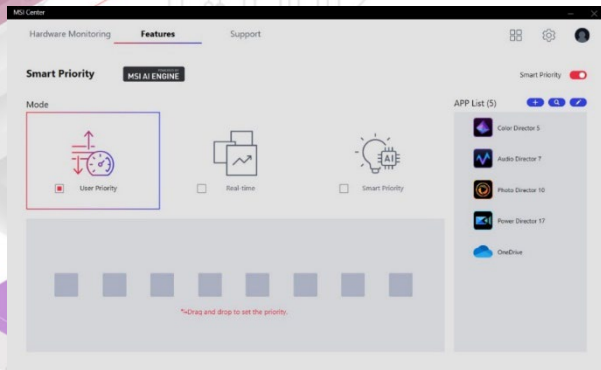


# MSI Center

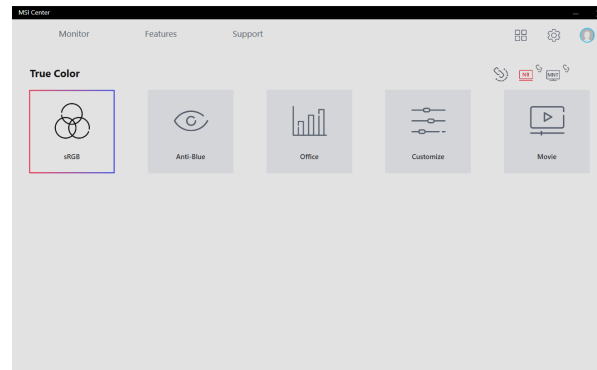
The MSI Center takes optimization to the next level with customizable UI that avoid unnecessary workload for your system and easily adjustable system modes; it helps to prioritize & allocate the resource on your hand and accelerate the performance of those software which you work with every day.



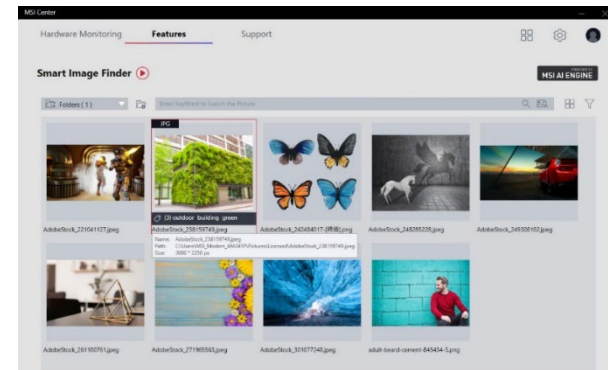
LAN Manager provides you the best online traffic experience



Prioritize your work with Smart Priority



Setup your monitor color for different use



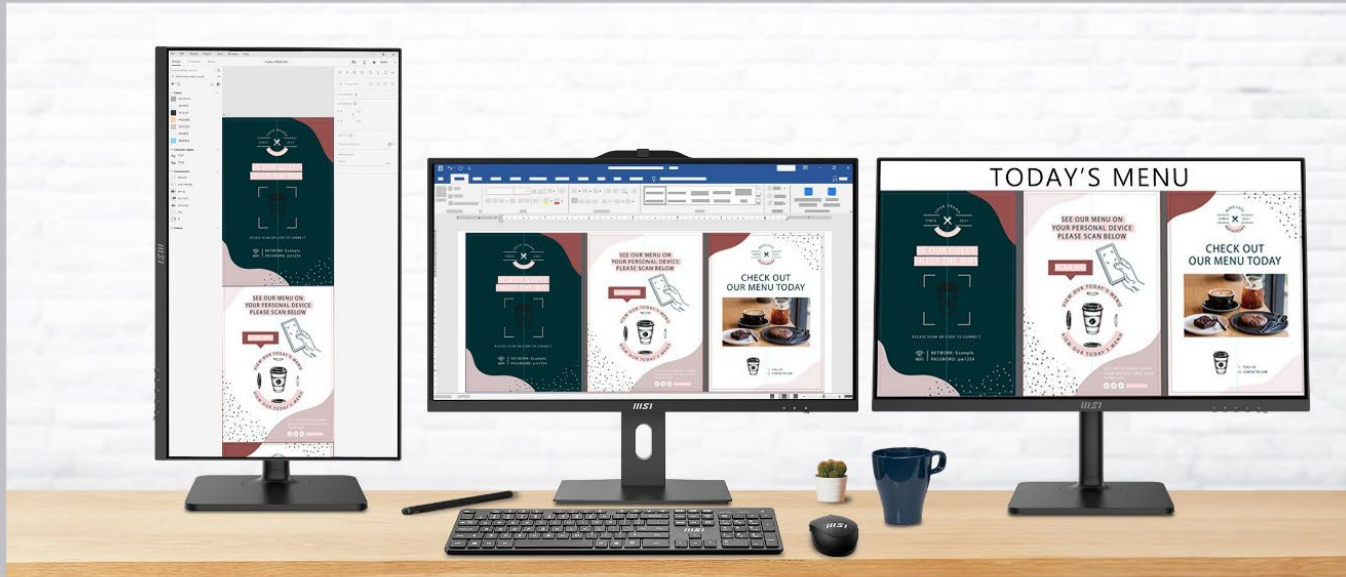
Easily organize and find your pictures with Smart Image Finder

\*The interface and functionality may differ due to version change. Please download the latest MSI Center APP through Microsoft Store.

# Triple Display with HDMI™ & DP Output

*msi*

By connecting two additional monitors through HDMI™ and DP output ports, users can easily multitask and improve the productivity.





# Dual Display with a Second Monitor

Maximize productivity and enhance the e-commerce experience with the power of dual displays. Experience the benefits of a seamless workflow and take efficiency to the next level.





# IPS Panel with 178° Viewing Angle

*msi*

IPS panel offers 178-degree wide viewing angle, optimizing screen color and brightness for consistent picture quality from any angle.

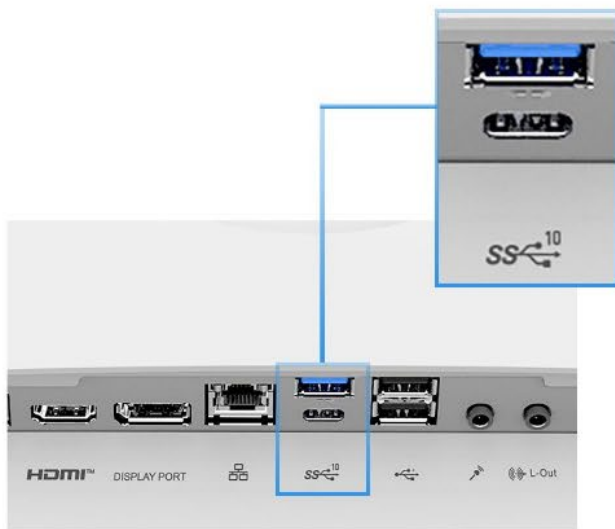


# VESA Mountable Design

The PRO AP272P series can be conveniently mounted on any surface that supports VESA. It can be utilized as a display for public service, providing an intuitive and professional experience.



# USB 3.2 Gen 2 Type C & Type A



**USB 3.2** TYPE-A  
TYPE-C  
**GEN 2**

USB 3.2 Gen 2 Type-C and Type-A ports provide 5x faster transfer rates (up to 10Gbps) than USB 2.0.

This enables faster downloading of transaction logs and copying of data to external storage.

# Connect All of Your Productive Devices

*msi*

Wi-Fi 6E has better security, improved signal quality in areas with interference, and can connect to more devices simultaneously, achieving speeds up to 2.4Gbps.

Up to

**3X**

Faster Gigabit Speeds

Up to

**75%**

Lower Latency

Support

**MU-MIMO**

Protocols



\*The actual specification will vary by model.

# DTS Audio Enhancer for Immersive Audio

*msi*



Experience lossless audio and premium sound quality with DTS Audio Processing, immersing yourself in natural-sounding music, videos, and more as it was intended.

# Design with Green

*msi*



Thank you for saving the planet with us

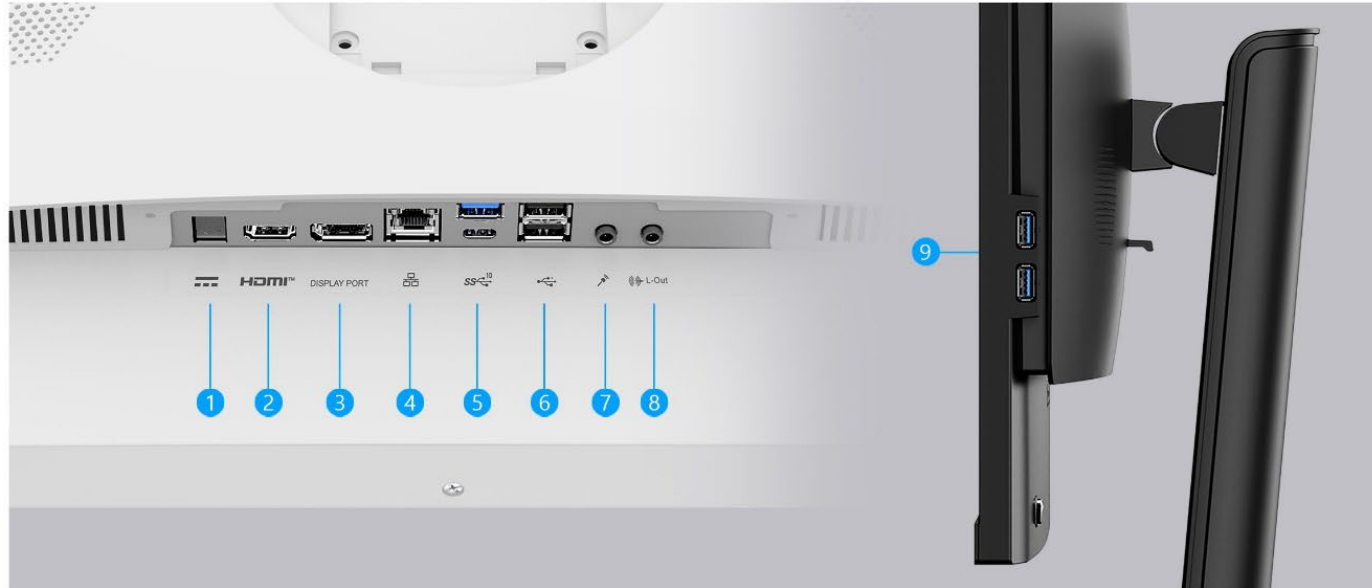
MSI is committed to mitigating the environmental impacts of its business activities through green production and supply chain management.

The PRO AP272P series meets various energy requirements, such as CE/CB, ENERGY STAR, ROHS, FCC, UL, etc., to reduce energy consumption, improve efficiency, and protect our only planet.





# PRO AP272P 14M I/O Port



1. 1 x DC Jack
2. 1x HDMI™ out (supports 4K @60Hz as specified in HDMI™ 2.1)
3. 1 x DisplayPort out (1.4)
4. 1 x RJ-45 LAN
5. 1 x USB 3.2 Gen 2 Type C /

6. 2 x USB 2.0 Type A
7. 1 x Mic-in
8. 1 x Line-out
9. 2 x USB 3.2 Gen 1 Type A

# PRO AP272P 14M Specification

<b>CPU</b>	Intel® Core™ i7 processor 14700 (33M Cache, 2.10 GHz up to 5.40 GHz) Intel® Core™ i5 processor 14400 (20M Cache, 2.50 GHz up to 4.70 GHz) Intel® Core™ i3 processor 14100 (12M Cache, 3.50 GHz up to 4.70 GHz)
<b>OS</b>	Windows 11 Home Windows 11 Pro - MSI recommends Windows 11 Pro for business
<b>CHIPSET</b>	Intel® H610
<b>STORAGE</b>	1x M.2 SSD (PCIe / SATA Auto Switch) 1x 2.5" HDD / SSD
<b>MEMORY</b>	2x DDR5 up to 5600 MHz SO-DIMMs, up to 64GB *5600 MHz (with Core i5 processor above and 1R memory) *5200 MHz (with Core i5 processor above and 2R memory) *4800 MHz (with Core i3 processor) *The system speed follows the Intel POR (Plan of Record) design. Actual specifications will vary depending on the model.
<b>GRAPHICS</b>	Intel® UHD Graphics
<b>PANEL RESOLUTION</b>	27" IPS Grade Panel LED Backlight (1920*1080 FHD) with MSI Anti-Flicker technology
<b>TOUCH PANEL</b>	Non-touch
<b>AUDIO SPEAKER</b>	2x 3W
<b>I/O</b>	Side: 2x USB 3.2 Gen 1 Type A  Rear: 1x USB 3.2 Gen 2 Type C, 1x USB 3.2 Gen 2 Type A, 2x USB 2.0 Type A, 1x RJ45, 1x HDMI™ out (supports 4K @60Hz as specified in HDMI™ 2.1), 1x DP out (1.4), 1x Mic-in, 1x Line-out
<b>AUDIO</b>	Realtek ALC897
<b>LAN</b>	Intel® I219-V
<b>WIRELESS LAN</b>	Intel Wi-Fi 6E AX211 / Intel Wireless AC 9462, either one
<b>BLUETOOTH</b>	5.3 (for AX211) / 5.1 (for AC 9462)
<b>WEBCAM</b>	Built-in FHD Webcam which supports Windows Hello Removable webcam cover design
<b>KEYBOARD / MOUSE</b>	Optional
<b>AC ADAPTER</b>	120W
<b>ADJUSTMENT (TILT)</b>	-5° ~ 20°
<b>ADJUSTMENT (Height)</b>	0 ~ 100 mm
<b>DIMENSION (WXDXH)</b>	613.49 x 362.46 x 499.51 mm (24.15 x 14.27 x 19.67 inch)
<b>NET WEIGHT</b>	6.65 kg (14.66 lbs)
<b>GROSS WEIGHT</b>	12.25 kg (27.01 lbs)
<b>CERTIFICATES</b>	FCC, CB/CE, UL & CUL, VCCI, RCM
<b>NOTE</b>	Support VESA wall mount kit with specific screws, please contact with service center.



# Successful & Stylish B2B projects

Over the past years, MSI has successfully supported Countless of commercial projects, including government tenders, restaurant & hotel facilitation, shopping mall navigation projects, school & university developments and professional office projects.

Find more details about many of these projects on: <https://www.msi.com/pro-projects/global>





# THE LEAP TO SINGULARITY

Official Partner

**msi**



**AMG**  
MOTORSPORT



**PCR**  
POST-CONSUMER RECYCLED

**META**  
READY

